



THE 400 BUILDING

400 Missouri Avenue in the Water Tower Square Business Park



FOR FURTHER
INFORMATION, CONTACT:

Cory Hoehn
812-288-9057
cory@watertowersquare.com

Kyle Hoehn
812-288-9057
kyle@watertowersquare.com

THE CORNERSTONE GROUP
300 Missouri Avenue Suite 102
Jeffersonville, IN 47130
812-288-9057
812-284-8346 fax

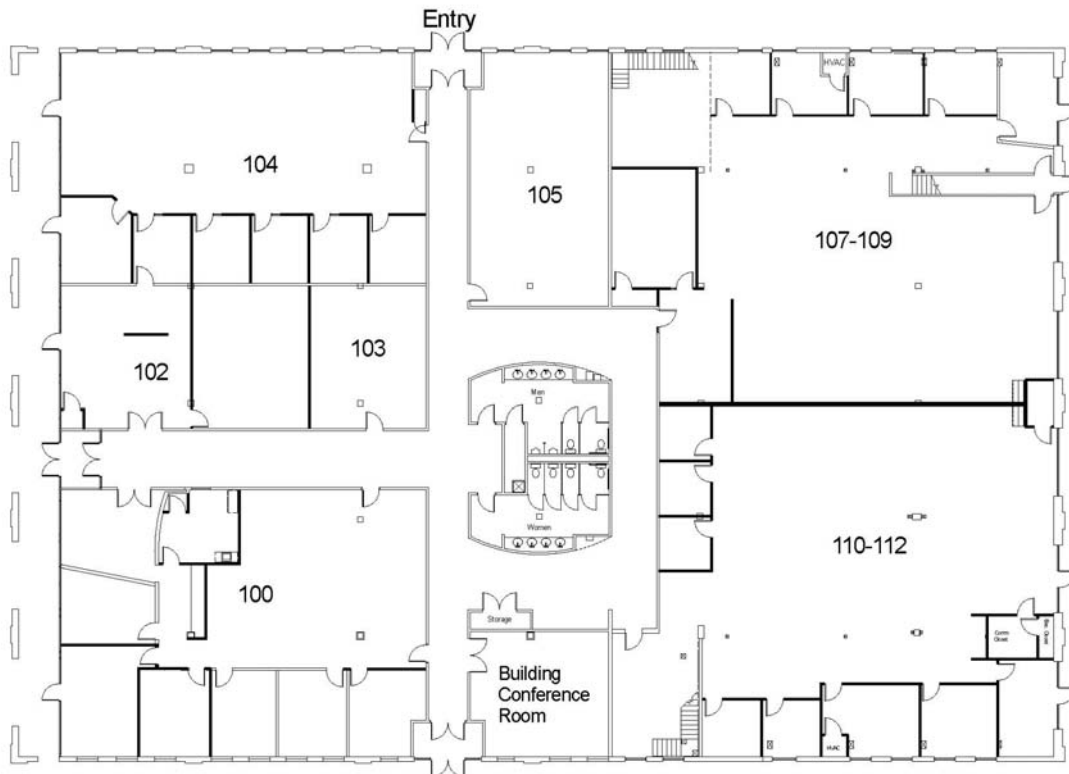
- ◆ 27,000 square foot multi-tenant office building
- ◆ Elegant lobby with granite tiled floors, indirect lighting, and fabric wallcoverings
- ◆ Ample free lighted parking at the front door
- ◆ Close proximity to Downtown Louisville and I-65, I-64, and I-71
- ◆ Access controlled and video monitored entrances
- ◆ Abundant natural light and high ceilings allow for flexible floor plans
- ◆ On-site ownership, management, and maintenance
- ◆ Tenant controlled HVAC systems
- ◆ 24/7/365 Tenant access
- ◆ Outdoor courtyard with seating and water feature
- ◆ Beautiful 19th Century architecture combined with 21st Century construction

FOR MORE INFORMATION AND AVAILABLE SPACE, LOG ONTO WWW.WATERTOWERSQUARE.COM



THE 400 BUILDING

400 Missouri Avenue in the Water Tower Square Business Park



Building Specifications

FOR FURTHER
INFORMATION, CONTACT:

Cory Hoehn
812-288-9057
cory@watertowersquare.com

Kyle Hoehn
812-288-9057
kyle@watertowersquare.com

THE CORNERSTONE GROUP
300 Missouri Avenue Suite 102
Jeffersonville, IN 47130
812-288-9057
812-284-8346 fax

Building Address	400 Missouri Avenue Jeffersonville, IN	Security System	Key card or pin pad access at all entry and exit points
Available	Space Available Immediately	Construction	Brick and heavy timber with tinted glass
Building Sq. Ft.	27,000 rentable square feet Single story w/mezzanine	Parking	Ample free and lighted spaces surround building
Fiber Optics	High-speed connectivity available throughout	HVAC	Fully tenant controlled forced-air units
Ceiling Heights	First Floor 10' 6" Mezzanine 8' 6"		

FOR MORE INFORMATION AND AVAILABLE SPACE, LOG ONTO WWW.WATERTOWERSQUARE.COM