



# THE 360 BUILDING

360 Missouri Avenue in the Water Tower Square Business Park



FOR FURTHER  
INFORMATION, CONTACT:

**Cory Hoehn**  
812-288-9057  
cory@watertowersquare.com

**Kyle Hoehn**  
812-288-9057  
kyle@watertowersquare.com

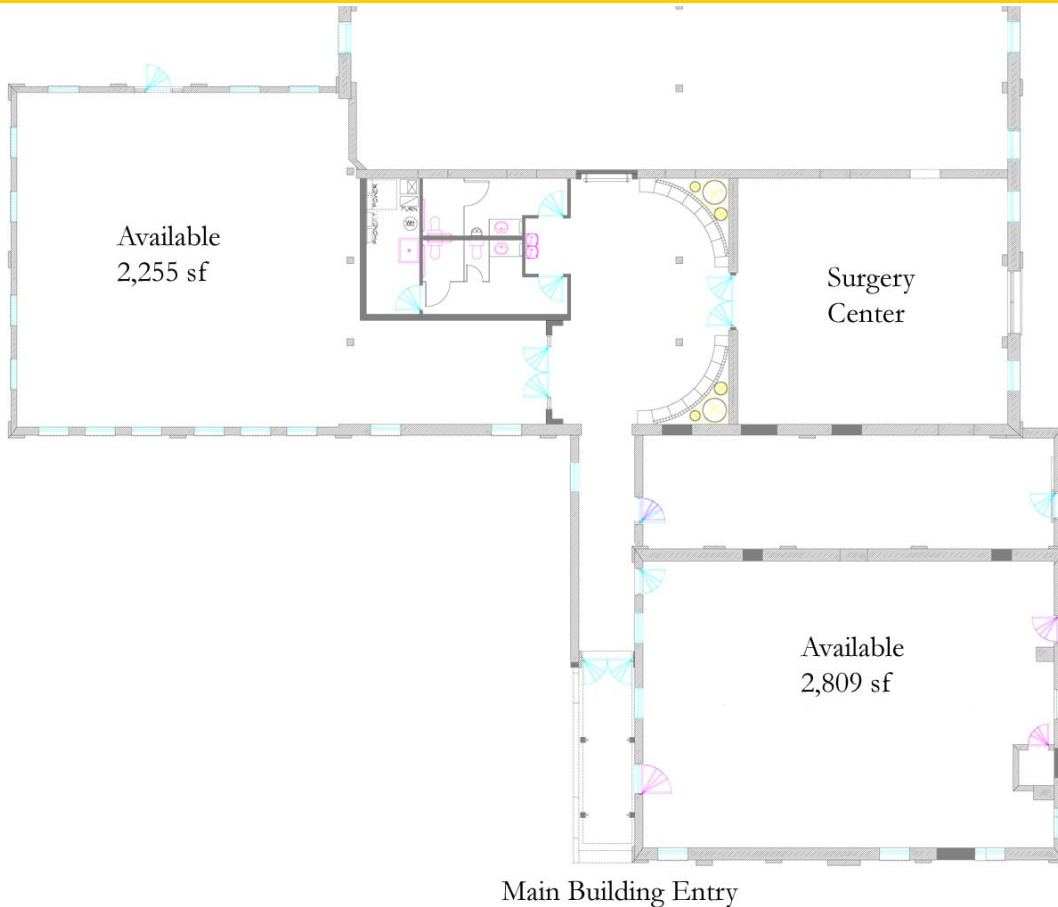
**THE CORNERSTONE GROUP**  
300 Missouri Avenue Suite 102  
Jeffersonville, IN 47130  
812-288-9057  
812-284-8346 fax

- ◆ 14,000 square foot multi-tenant office building
- ◆ Gorgeous entry features exposed brick walls and natural wood beams
- ◆ Built-to-suit tenant suites feature many windows for ample natural light, exposed brick, and unique architectural details throughout
- ◆ Abundant free and lighted parking at the front door
- ◆ Close proximity to Downtown Louisville and I-65, I-64, and I-71
- ◆ Access controlled entrances
- ◆ Landscaped courtyard with seating areas
- ◆ On-site ownership, management, and maintenance
- ◆ Tenant controlled HVAC systems
- ◆ 24/7/365 Tenant access

FOR MORE INFORMATION AND AVAILABLE SPACE, LOG ONTO [WWW.WATERTOWERSQUARE.COM](http://WWW.WATERTOWERSQUARE.COM)



# THE 360 BUILDING



## Building Specifications

FOR FURTHER INFORMATION, CONTACT:

**Cory Hoehn**  
812-288-9057  
cory@watertowersquare.com

**Kyle Hoehn**  
812-288-9057  
kyle@watertowersquare.com

THE CORNERSTONE GROUP  
300 Missouri Avenue Suite 102  
Jeffersonville, IN 47130  
812-288-9057  
812-284-8346 fax

<b>Building Address</b>	360 Missouri Avenue Jeffersonville, IN	<b>Security System</b>	Key card access at all entry and exit points
<b>Available</b>	45-60 days	<b>Construction</b>	Brick and heavy timber with tinted glass
<b>Building Sq. Ft.</b>	13,489 rentable square feet	<b>Parking</b>	Ample free and lighted parking surrounds building
<b>Fiber Optics</b>	High-speed connectivity available throughout	<b>HVAC</b>	Fully tenant controlled forced-air units
<b>Ceiling Heights</b>	First Floor      10' 6"		

**FOR MORE INFORMATION AND AVAILABLE SPACE, LOG ONTO [WWW.WATERTOWERSQUARE.COM](http://WWW.WATERTOWERSQUARE.COM)**