



590 MISSOURI AVENUE SUITE 201

In The Water Tower Square Business Park



FOR FURTHER
INFORMATION, CONTACT:

Cory Hoehn
812-288-9057
cory@csgrealestate.com

Kyle Hoehn
812-288-9057
kyle@csgrealestate.com

THE CORNERSTONE GROUP
300 Missouri Avenue Suite 102
Jeffersonville, IN 47130
812-288-9057
812-284-8346 fax

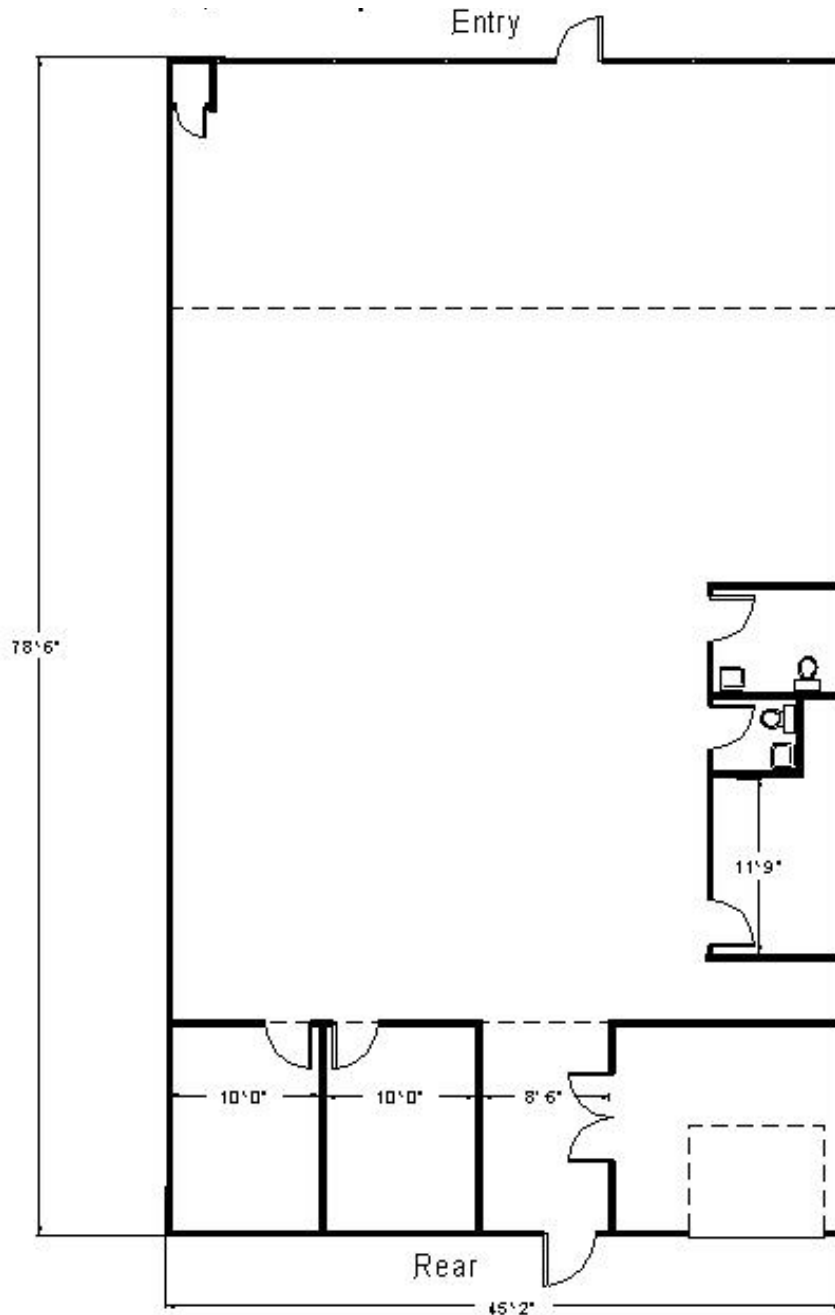
- ◆ 3,600 SF available
- ◆ Excellent sales office or showroom
- ◆ Vaulted ceilings in open office area with skylights provide natural light throughout
- ◆ Highly visible location with exceptional access to I-65 and U.S. 31
- ◆ Includes 2 private offices, a large board room, two large areas for workstations, break room, and two restrooms
- ◆ Terrific signage opportunity
- ◆ Ample free, lighted parking
- ◆ High-speed internet access available
- ◆ 24/7/365 access

FOR MORE INFORMATION AND AVAILABLE SPACE, LOG ONTO WWW.WATERTOWERSQUARE.COM



590 MISSOURI AVENUE SUITE 201

In The Water Tower Square Business Park



FOR FURTHER
INFORMATION, CONTACT:

Cory Hoehn
812-288-9057
cory@watertowersquare.com

Kyle Hoehn
812-288-9057
kyle@watertowersquare.com

THE CORNERSTONE GROUP
300 Missouri Avenue Suite 102
Jeffersonville, IN 47130
812-288-9057
812-284-8346 fax